

2024



INNSBRUCK

A-277 CANADIAN Single Section Homes



BUILT FOR CANADA



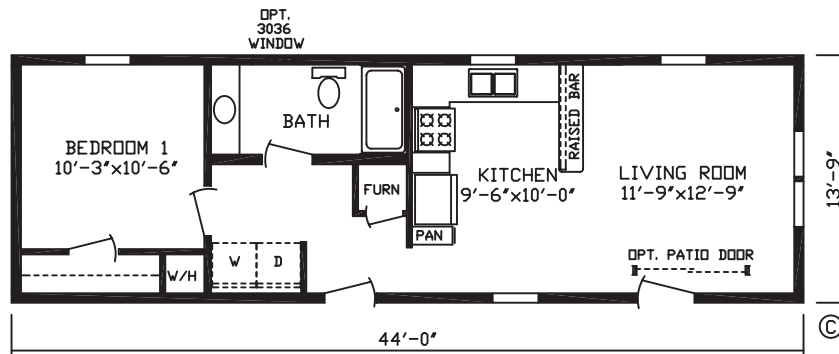
fairmonthomes.com

14 WIDES

MANCHESTER

MODEL #147052L

1 Br - 1 Bath - 605 Sq Ft

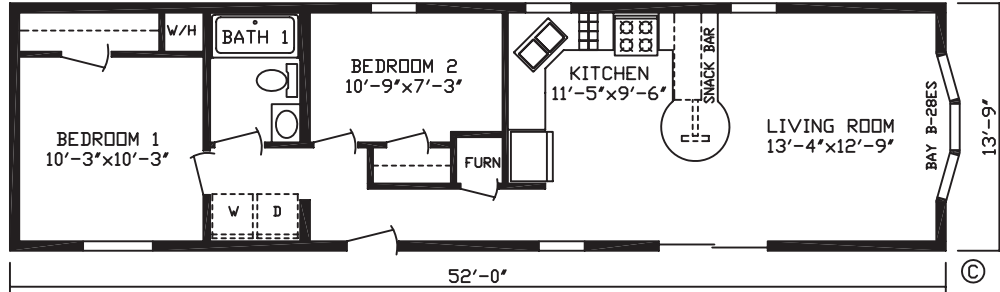


14 WIDES

HURON

MODEL #147029L

2 Br - 1 Bath - 715 Sq Ft

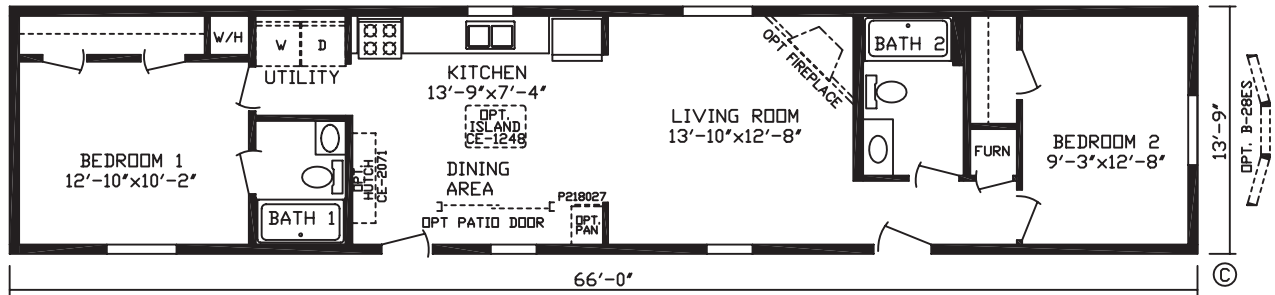


14 WIDES

ROSEMONT

MODEL #147037L

2 Br - 2 Bath - 907 Sq Ft

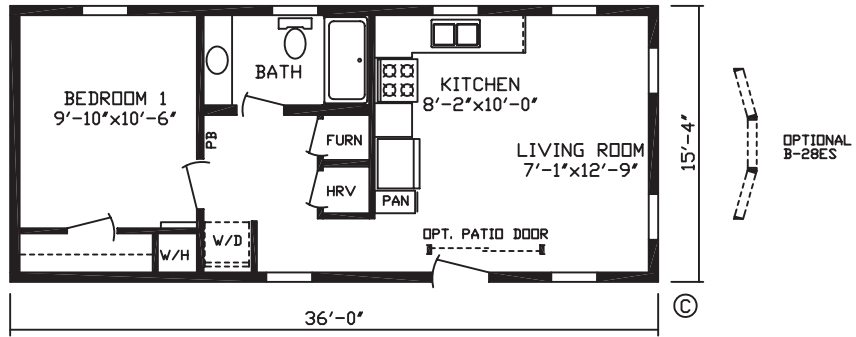


16 WIDES

NEWDALE

MODEL #147055

1 Br - 1 Bath - 551 Sq Ft

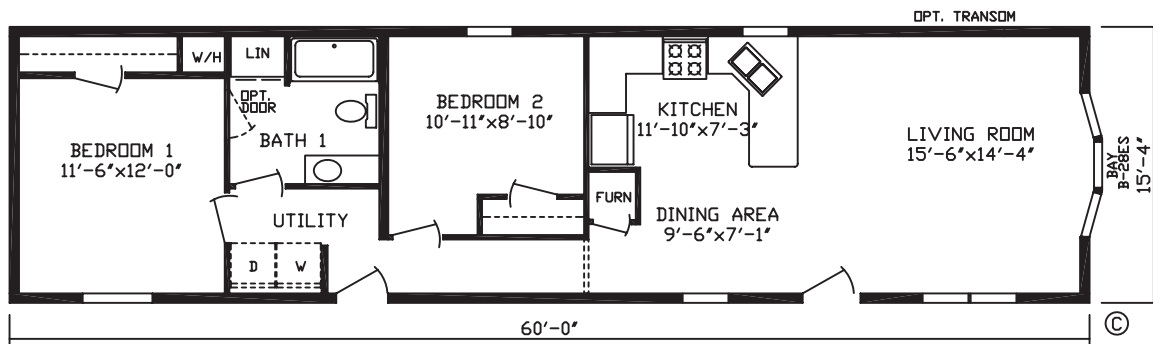


16 WIDES

OPAL

MODEL #147049L

2 Br - 1 Bath - 919 Sq Ft

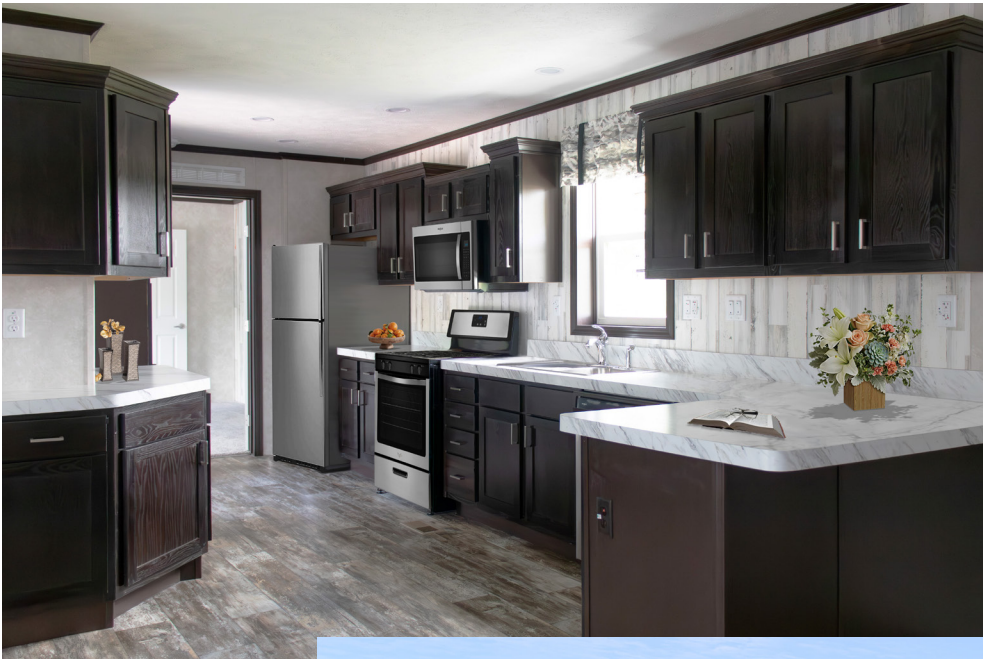
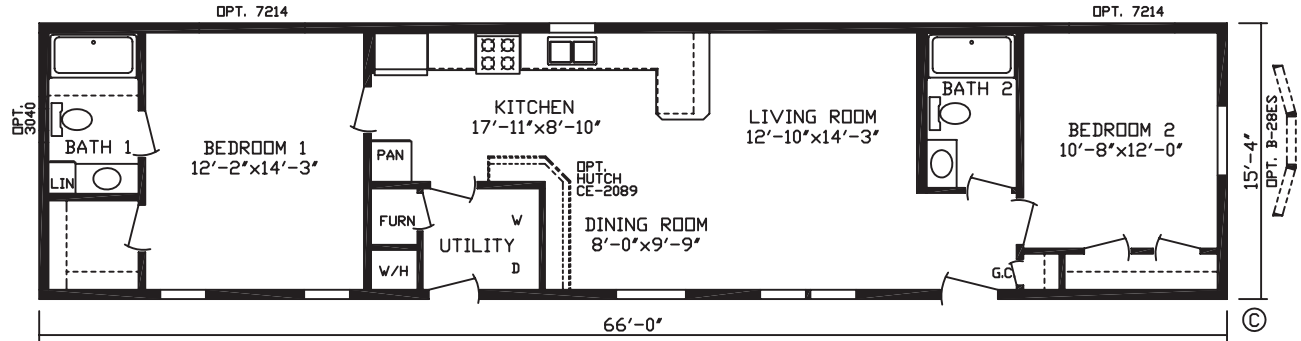


16 WIDES

BRANDON

MODEL #147043L

2 Br - 2 Bath - 1,011 Sq Ft

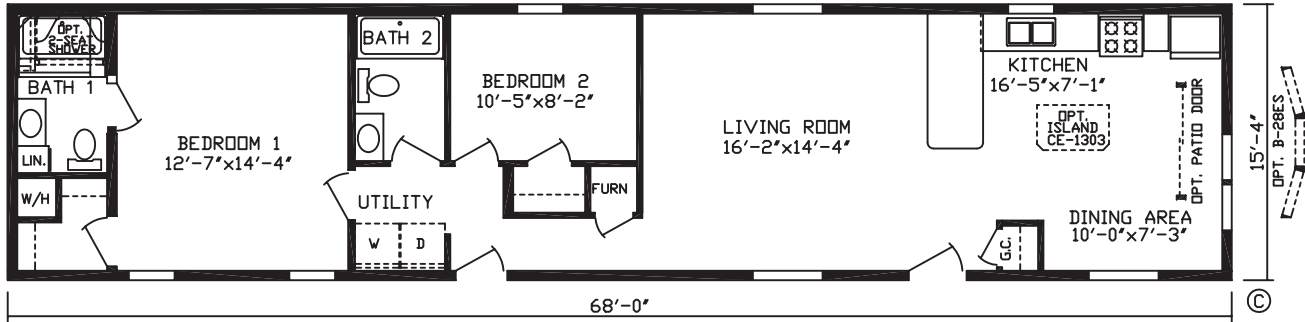


16 WIDES

CYPRESS

MODEL #147022L

2 Br - 2 Bath - 1,042 Sq Ft

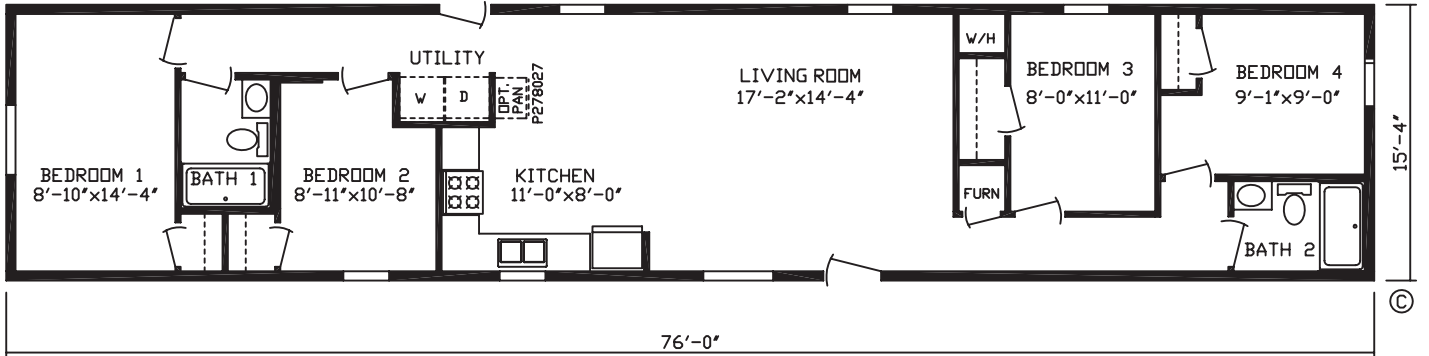


16 WIDES

BRADY

MODEL #147035

4 Br - 2 Bath - 1,165 Sq Ft

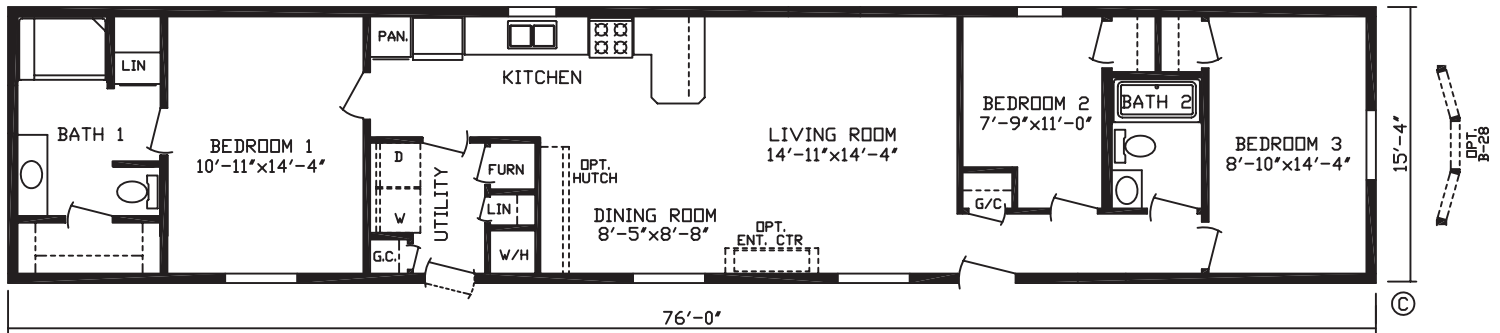


16 WIDES

DARLINGTON

MODEL #147054L

3 Br - 2 Bath - 1,165 Sq Ft





INNSBRUCK

A-277 CANADIAN Single Section Homes

Standard Features

Energy Savings

- Kinro® Low E Non Gridded Thermopane Windows
- HomeGuard™ Exterior Weather Wrap
- OSB Exterior Sheathing, Sidewalls & Endwalls
- 6 Mil Vapor Barrier At Exterior Walls
- R-50 Roof Insulation
- 2x6 Sidewalls w/R-24 Sidewall Insulation
- R-31 Floor Insulation
- Trane® 95% Plus High Efficient Furnace
- Perimeter Heat
- Zone 1 Region Specifications

Exterior & Construction

- 8' Sidewall Height w/Flat Ceilings
- 60 lb Ground Snow Load
- 2x10 Floor Joist 16 O.C.
- 19/32" OSB Tongue & Groove/ Glued & Screwed 4' x 8' Floor Decking
- Shutters, Doorside & Hitchend
- 4-1/2" Dutch Lap Vinyl Siding
- Owens Corning® Oak Ridge Pro Shingles
- 1/2" OSB Roof Decking
- Lauan Substrate At Exterior Walls

Floor Coverings

- Shaw® 25 oz Polyester Carpet
- Congoleum® Linoleum (Foyer, Kitchen, Dining Room, Utility, Bathrooms)
- 5 Pound Rebond Carpet Pad
- Tack Strip Carpet Installation

Electrical

- 100 Amp Breaker Box
- (2) Exterior GFI Weather Resistant Receptacle
- Humidistat Installed
- LED Can Lights Standard

Plumbing

- 50 Gallon Electric Water Heater w/Double Element
- 7" Stainless Steel Kitchen Sink
- Water Shut Off Valves At Sinks & Commodes
- Main Water Shut Off In Water Heater Compartment
- Frost Free Faucet
- Pex Water Line System
- Plumb For Washer & Dryer

Bathrooms

- 1 Piece Fiberglass Tubs
- Elongated Commodes
- Porcelain Sinks
- Mirror Above Each Bath Lav
- Cosmetic Light Above Mirror In Baths

Cabinetry

- 40" Overhead Custom Designed Kitchens
- Shaker Rustic Shore Mortise & Tenon Cabinet Doors
- Hardwood Cabinet Stiles- Pre-Drilled & Screwed
- Adjustable Hidden Hinges
- 3-1/2" Crown Molding Above Kitchen Cabinets
- Formica Edging In Kitchen
- High Pressure Laminated Countertops & Backsplash
- Drawer Above Base Cabinets In Kitchen
- Cabinets Over Refrigerator
- Breaker Box Cover
- Dovetail Drawer

Décor

- Madison Drape Package
- 1" Mini-Blinds
- 2-1/4" Door & Window Casing
- 3 5/8" Ceiling Cove In Living Areas
- Brushed Nickel Hardware & Cabinet Pulls
- 1/2" Vinyl on Gypsum Walls
- Stippled Ceiling

Doors

- 38x82 White Decorator Front Door w/Storm & Deadbolt
- 34x82 White Decorator Rear Door w/ Storm & Deadbolt
- 2-Panel White Interior Doors
- Furnace Door

Appliances

- 18 CF S.S. Frost Free Refrigerator
- 30" S.S. Standard Clean Gas Range w/Shut Off
- S.S. Dishwasher



2181 East Market Street • Nappanee, IN 46550 • fairmonthomes.com



FAIRMONT HOMES — Built Better with Brand Name Components



All descriptive representations of products in this brochure are believed to be accurate at the time of publication. However, due to product improvement and changes in suppliers, design and production may vary. Some optional items shown and some images depicted in this brochure show porches, garages, or breezeways that are built on site by others.

© 2022 Fairmont Homes, LLC Rev 01/2024